



32 Alder Hill Drive
Totton

£895 PCM

Well presented one bedroom first floor maisonette. With allocated parking. Holding fee is £206.00 Security Deposit £1032.00. Council tax band B. Income required to pass referencing: £26,850 per annum.



- Single Occupancy Only • Allocated Parking

The property features a good sized open plan living / dining area with kitchen off.

Double bedroom with large built in mirrored wardrobes

The bathroom has a white suite with bath and shower above, wash hand basin and toilet.

The property benefits from one allocated parking space

Lounge - 13'5" x 12'5"

Dining Area - 9'8" x 8'6"

Kitchen - 8' x 5'6"

Bedroom 11' x 9'8"

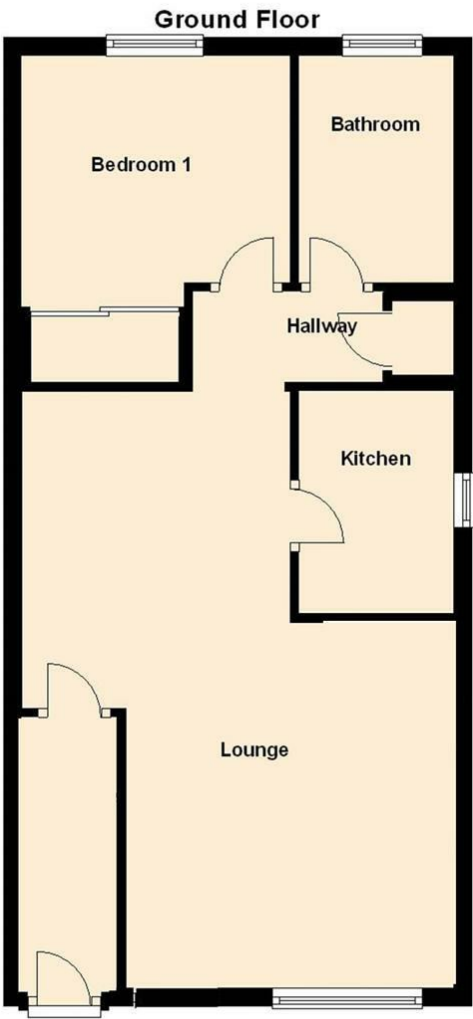
Bathroom with shower

For broadband and mobile coverage please refer to OffCom

ADDITIONAL INFORMATION

Council tax band: B Furnishing Type: Unfurnished Security Deposit: £1,032 Available From: 17th July 2025





Energy Efficiency Rating

| | Current | Potential |
|---|--------------|-----------|
| Very energy efficient - lower running costs | | |
| (92 plus) A | | |
| (81-91) B | | |
| (69-80) C | 71 | 78 |
| (55-68) D | | |
| (39-54) E | | |
| (21-38) F | | |
| (1-20) G | | |
| Not energy efficient - higher running costs | | |
| England & Wales | EU Directive | |



SPENCERS

LETTINGS

ABOUT US

Spencers' lettings office offers a dedicated, specialist lettings service with every aspect managed in-house, from maintenance to property inspections. The team undergo regular training to keep on top of continually changing legislation and are frequently praised by landlords and tenants for their friendly professionalism, thoroughness and reliability. The office works closely with Spencers' estate agency offices and broadly covers the New Forest area including Lymington and Lyndhurst, Romsey and Totten, Beaulieu, Ringwood, Brockenhurst, Burley and the Christchurch area including Highcliffe and Barton on Sea.



CONTACT US

Lymington 01794 331433

Highcliffe 01425 205000

Romsey 01794 331433

lettings@spencersproperty.co.uk

www.spencersproperty.com